

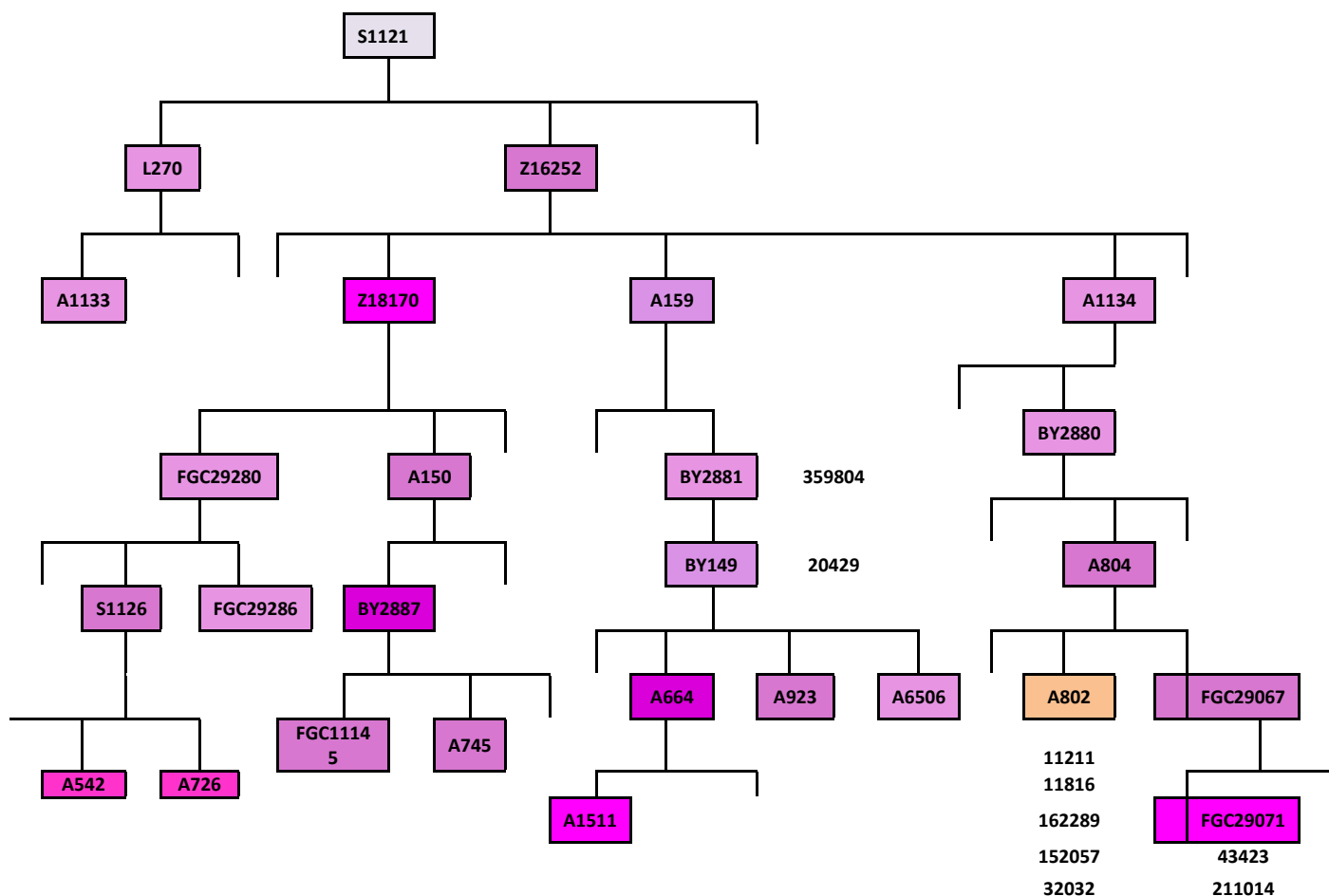
# THE Y-DNA PROJECT

October 2015

Quarterly report from Elizabeth O'Donoghue/Ross, the Society's Group Administrator

We've had a bit more activity this last quarter, with a number of participants SNP testing to find their branch on the haplotree in addition to further upgrades of STRs.

The Glens/Irish Type II group has two kits with upgraded markers and five with new SNP results, three of them matching The Glens branch of the Irish Type II/CTS4466 tree and two others tested to other nearby branches of the CTS4466 tree - BY2881 and FGC29067. There are a total of nine BIG Y and CTS4466 SNP Pack results now from The Glens group, all clustered under the main S1121 SNP. I've noted below their kit numbers and where they are in the hierarchy. While they don't all match The Glens completely, they are in the same 'neck of the woods'.



The new member matching Tighe O'Donoghue/Ross has tested to DF5, matching Tighe there as expected. The Cavan Group B has a member tested to L513, which is probably the SNP for the rest of that group as well if they tested to confirm. Our Group II has a member tested Z253, which is likely the SNP for that group also.

If any of you are interested in further testing yourselves, let me know and I can see what suggestions there would be for you. Maybe Santa will be good to you, when there are usually sales on at the end of the year at Family Tree. A test is also a nice gift idea for someone else. And you can always donate a bit of \$\$ to the project for us to use for testing that would benefit the project as a whole. Our cupboard is rather bare at the moment.

I repeat that anyone in the Glens tribe who hasn't joined the R1b-CTS4466 Plus project - <https://www.familytreedna.com/public/R1b-CTS4466Plus/> - is welcome and urged to do so. Also, anyone with known Munster ancestors should join the Munster Irish project - <https://www.familytreedna.com/groups/munster-irish/about>.

There are haplogroup projects for just about every haplogroup, so anyone in one of the others could benefit by the work those projects are doing. I can help you determine which is the one to join if you wish.

I have work to do to update the pages on the Society website, and Rod will be updating the new spreadsheet on the website shortly. You can always see the results on the Family Tree website as well at <https://www.familytreedna.com/public/ODonoghue/>.

An early wish for a Happy Holiday Season to you all.